

EAGLE P60

HIGH-ENERGY, DRIVE-THROUGH CARGO & VEHICLE INSPECTION SYSTEM

KEY FEATURES AND BENEFITS

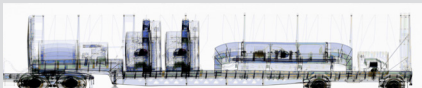
- Reliable 6 MeV X-ray imaging system
- Throughput of up to 100 vehicles per hour
- Three-color material discrimination assists in the classification of materials



The all-new Eagle[®] P60 inspection system is ideally suited for helping customers fight trade fraud and drug smuggling, as well as combating terrorism. Its high penetration and resolution deliver detailed images of dense and cluttered cargo for deep insight into the contents, increasing the efficiency of scanning operations.

In addition to the cargo, the cab of a truck offers a multitude of concealment options for smugglers of currency, drugs, weapons, and people. Our patented CabScan[®] technology safely scans the cab of the truck, from the front bumper to the start of the cargo container.

The new Eagle P60 was developed with a small system footprint so customers can deploy the high-energy, drive-through system into existing traffic lanes, with minimal interruption to the site layout. The new Eagle P60 can accommodate vehicles up to 5 meters in height without image cutoff.



Eagle P60 transmission X-ray image with material discrimination

SPECIFICATIONS

EAGLE P60

TYPICAL PERFORMANCE

- **Steel Penetration:** 330 mm
- **Wire Resolution:** 1.2 mm

OPERATING FEATURES

- **X-ray Source:** 6 MeV
- **Crew:** Scan coordinator and image analyst
- **Scan Modes:** Automatic cab exclusion and optional CabScan
- **Scan Direction:** Single or optional bi-directional
- **Scanning Speed:** 3–8 km/hr
- **Power Requirements:**
 - **50 Hz:** 400 V, 63 A, 40 kVA
 - **60 Hz:** 400 V, 63 A, 40 kVA

SYSTEM DIMENSIONS AND SPECIFICATIONS

Overall Dimensions

- **Width:** 7.6 m (24 ft 11 in)
- **Height:** 5.8 m (19 ft)
- **Depth:** 3.7 m (12 ft)

Maximum Vehicle Dimensions

- **Width:** 2.8 m (9 ft 2 in)
- **Height:** 5 m (16 ft 5 in)

ENVIRONMENT

- **Operating Temperature:** -20 °C to 40 °C (-4 °F to 104 °F)

HEALTH AND SAFETY

- **Shielded Radiation Exclusion Zone (80 trucks per hour):** 26 m x 11.4 m (85 ft 4 in x 37 ft 5 in)
- **Radiation Dose at Exclusion Zone Boundary:** 0.5 µSv in any one hour
- **Radiation Dose to Driver:** Less than 0.25 µSv per scan
- **Radiation Dose to Crew:** 0.5 µSv in any one hour
- **Radiation Dose to Cargo:** Less than 20 µSv per scan

The performance characteristics and photos in this document are indicative and for information only and specifications may vary depending on scan speeds, options and other factors; the specific characteristics of individual systems may differ based upon customer requirements, operation, and supplied options. For systems that have already been purchased, please refer to the contract or purchase order for system specifications. In addition, due to continual development of Rapiscan Systems and AS&E products, we reserve the right to amend specifications listed here without notice. Please note that due to U.S. laws and regulations, not all products are available for sale in all countries without restriction.

© 2019 Rapiscan Systems | American Science and Engineering, Inc.

Rapiscan | AS&E — Part of the OSI Systems family of security companies. We deliver products and services that help our customers find threats and contraband with ease and confidence, while maximizing operational efficiency. Our global service network enables us to respond to customer needs quickly and provide exceptional support, because we know that every moment of uptime is critical. We understand the importance of our customers' missions—from uncovering trade fraud, to combating terrorism, to detecting drug and weapons smuggling, to exposing illegal immigration. That's why it's our mission to help them succeed.

US Operations
829 Middlesex Turnpike
Billerica, MA 01821

UK Operations
Prospect Way
Victoria Business Park
Biddulph, Stoke-on-Trent ST8 7PL

Contact
Tel: +1.978.262.8700
Fax: +1.978.262.0533
rapiscan-ase.com

SYSTEM OPTIONS

- **CabScan® Mode:** Safely scans the cab of the truck, from front bumper to start of cargo
- **Bi-directional Scan Mode:** Allows operator to easily switch the direction of traffic flow
- **Integrated Peripheral Devices:** License/number plate recognition system, container code recognition system, and manifest scanner
- **Integrated Radiation Detection:** Gamma or gamma/neutron
- **Cold Weather Package:** For operating temperature of -40 °C to 40 °C (-40 °F to 104 °F)
- **Hot Weather Package:** For operating temperature of -20 °C to 55 °C (-4 °F to 131 °F)

Rapiscan
systems

AS&E